

Anti-VPS36 antibody

Cat. No.	ml263213
Package	25 µl/100 µl/200 µl
Storage	-20°C, pH7.4 PBS, 0.05% NaN ₃ , 40% Glycerol

Product overview

Description	Anti-VPS36 rabbit polyclonal antibody
Applications	ELISA, WB, IHC
Immunogen	Synthetic peptide of human VPS36
Reactivity	Human, Mouse, Rat
Content	1 mg/ml
Host species	Rabbit
Ig class	Immunogen-specific rabbit IgG
Purification	Antigen affinity purification

Target information

Symbol	VPS36
Full name	vacuolar protein sorting 36 homolog (S. cerevisiae)

Synonyms EAP45; C13orf9; CGI-145

Swissprot Q86VN1

Target Background

Vacuolar sorting proteins (VPSs) are required for trafficking normal endocytic and biosynthetic proteins to the vacuole and also play an important role in the budding process of cells. The ESCRT-II (endosomal sorting complex required for transport II) complex, which is involved in endocytosis of ubiquitinated membrane proteins, is formed by Eap45, EAP30, and VPS25. These vacuolar sorting proteins are also involved in a multiprotein complex with RNA polymerase II elongation factor (ELL). Eap45 (ELL-associated protein of 45 kDa), also known as vacuolar protein-sorting-associated protein 36, is a 386 amino acid protein containing a GLUE (GRAM-like ubiquitin-binding in Eap45) domain that mediates the binding to ubiquitin and phosphoinositides. Since Eap45 colocalizes with ubiquitinated proteins on late endosomes, it is likely that Eap45 plays a role in the endosomal sorting of ubiquitinated cargo. There are two isoforms of Eap45 that exist as a result of alternative splicing events.

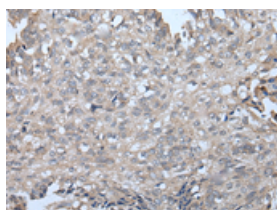
Applications

Immunohistochemistry

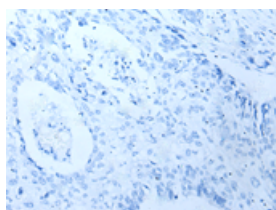
Predicted cell location: Cytoplasm

Positive control: Human lung cancer

Recommended dilution: 25-100



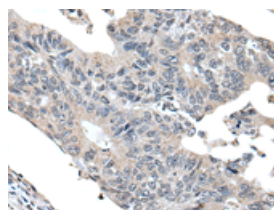
The image on the left is immunohistochemistry of paraffin-embedded Human lung cancer tissue using ml263213(VPS36 Antibody) at dilution 1/30, on the right is treated with synthetic peptide. (Original magnification: $\times 200$)



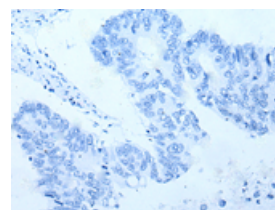
Predicted cell location: Cytoplasm

Positive control: Human colorectal cancer

Recommended dilution: 25-100



The image on the left is immunohistochemistry of paraffin-embedded Human colorectal cancer tissue using ml263213(VPS36 Antibody) at dilution 1/30, on the right is treated with synthetic peptide. (Original magnification: $\times 200$)



Western blotting

Predicted band size: 44 kDa

Positive control: Human tonsil tissue lysate

Recommended dilution: 200-1000

Gel: 8%SDS-PAGE

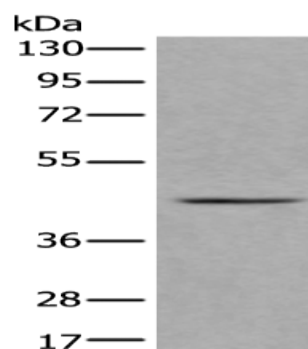
Lysate: 40 μ g

Lane: Human tonsil tissue lysate

Primary antibody: ml263213(VPS36 Antibody) at dilution 1/300

Secondary antibody: Goat anti rabbit IgG at 1/8000 dilution

Exposure time: 1 minute



ELISA

Recommended dilution: 5000-10000

联系电话: 4008-898-798, 021-61725725

联系QQ: 2881505695, 2881505696

邮箱: mlbio_cn@yeah.net

网址: www.mlbio.cn