

Anti-SLC37A4 antibody

Cat. No.	ml263691
Package	25 µl/100 µl/200 µl
Storage	-20°C, pH7.4 PBS, 0.05% NaN ₃ , 40% Glycerol

Product overview

Description	Anti-SLC37A4 rabbit polyclonal antibody
Applications	ELISA, WB, IHC
Immunogen	Synthetic peptide of human SLC37A4
Reactivity	Human, Mouse
Content	0.42 mg/ml
Host species	Rabbit
Ig class	Immunogen-specific rabbit IgG
Purification	Antigen affinity purification

Target information

Symbol	SLC37A4
Full name	solute carrier family 37 member 4

Synonyms G6PT1; G6PT2; G6PT3; GSD1b; GSD1c; GSD1d; TRG19; TRG-19; PRO0685

Swissprot O43826

Target Background

This gene regulates glucose-6-phosphate transport from the cytoplasm to the lumen of the endoplasmic reticulum, in order to maintain glucose homeostasis. It also plays a role in ATP-mediated calcium sequestration in the lumen of the endoplasmic reticulum. Mutations in this gene have been associated with various forms of glycogen storage disease. Alternative splicing in this gene results in multiple transcript variants.

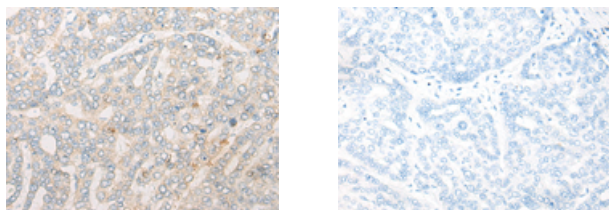
Applications

Immunohistochemistry

Predicted cell location: Cytoplasm

Positive control: Human liver cancer

Recommended dilution: 20-100



The image on the left is immunohistochemistry of paraffin-embedded Human liver cancer tissue using ml263691(SLC37A4 Antibody) at dilution 1/20, on the right is treated with synthetic peptide. (Original magnification: $\times 200$)

Western blotting

Predicted band size: 46 kDa

Positive control: Mouse liver tissue lysate

Recommended dilution: 200-1000

Gel: 8%SDS-PAGE

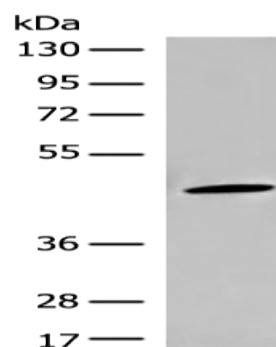
Lysate: 40 μ g

Lane: Mouse liver tissue lysate

Primary antibody: ml263691(SLC37A4 Antibody) at dilution 1/200

Secondary antibody: Goat anti rabbit IgG at 1/8000 dilution

Exposure time: 1 minute



ELISA

Recommended dilution: 5000-10000

联系电话: 4008-898-798, 021-61725725

联系QQ: 2881505695, 2881505696

邮箱: mlbio_cn@yeah.net

网址: www.mlbio.cn