

Anti-HELT antibody

Cat. No.	ml264169
Package	25 µl/100 µl/200 µl
Storage	-20°C, pH7.4 PBS, 0.05% NaN ₃ , 40% Glycerol

Product overview

Description	Anti-HELT rabbit polyclonal antibody
Applications	ELISA, WB, IHC
Immunogen	Synthetic peptide of human HELT
Reactivity	Human, Mouse
Content	0.84 mg/ml
Host species	Rabbit
Ig class	Immunogen-specific rabbit IgG
Purification	Antigen affinity purification

Target information

Symbol	HELT
Full name	helt bHLH transcription factor

Synonyms Mgn; HESL; HCM1228; bHLHb44

Swissprot A6NFD8

Target Background

Transcriptional repressor which binds preferentially to the canonical E box sequence 5'-CACGCG-3'.

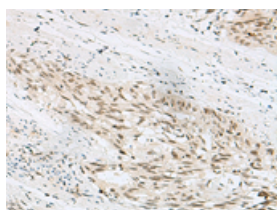
Applications

Immunohistochemistry

Predicted cell location: Nucleus or Cytoplasm

Positive control: Human esophagus cancer

Recommended dilution: 20-100

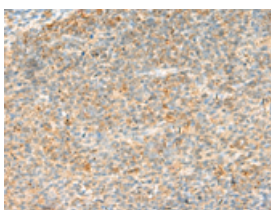


The image on the left is immunohistochemistry of paraffin-embedded Human esophagus cancer tissue using ml264169(HELT Antibody) at dilution 1/30, on the right is treated with synthetic peptide. (Original magnification: ×200)

Predicted cell location: Nucleus or Cytoplasm

Positive control: Human tonsil

Recommended dilution: 20-100



The image on the left is immunohistochemistry of paraffin-embedded Human tonsil tissue using ml264169(HELT Antibody) at dilution 1/30, on the right is treated with synthetic peptide. (Original magnification: ×200)

Western blotting

Predicted band size: 27 kDa

Positive control: Mouse liver tissue, Mouse heart tissue and Mouse brain tissue lysates

Recommended dilution: 200-1000

Gel: 8%SDS-PAGE

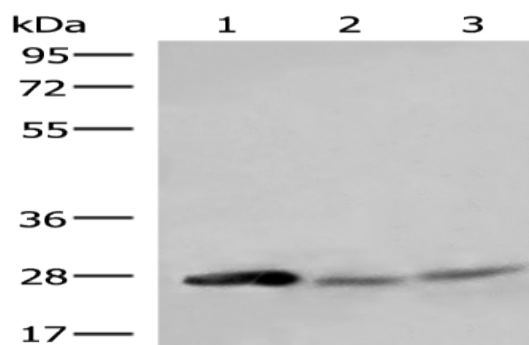
Lysate: 40 µg

Lane 1-3: Mouse liver tissue, Mouse heart tissue and Mouse brain tissue lysates

Primary antibody: ml264169(HELT Antibody) at dilution 1/350

Secondary antibody: Goat anti rabbit IgG at 1/8000 dilution

Exposure time: 5 minutes



ELISA

Recommended dilution: 5000-10000

联系电话: 4008-898-798, 021-61725725

联系QQ: 2881505695, 2881505696

邮箱: mlbio_cn@yeah.net

网址: www.mlbio.cn